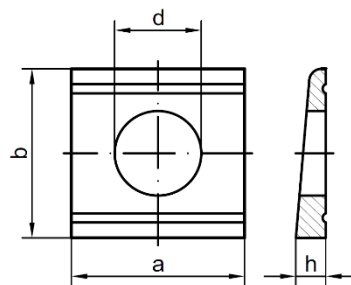


**CALE BIAISE UPN 14% DIN 435
EN ACIER GALVANISÉ À CHAUD**



DIN 435 (Pk C) 14%		
d	a/b	h
9	22/22	4.6/1.5
11	22/22	4.6/1.5
13.5	26/30	6.2/2
13.5	26/30	6.2/2
17.5	32/36	7.5/2.5
22	40/44	9.2/3
24	44/50	10/3