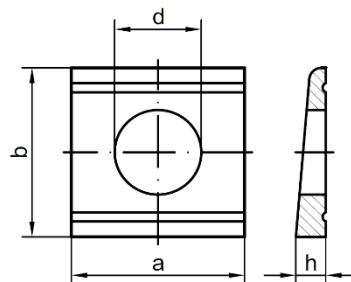


**CALE BIAISE UPN 8% DIN 434  
EN ACIER BRUT**



DIN 434 (Pk C) 8%		
d	a/b	h
9	22/22	3.8/2
11	22/22	3.8/2
13.5	26/30	4.9/2.5
13.5	26/30	4.9/2.5
17.5	32/36	5.9/3
22	40/44	7/3.5
24	44/50	8/4
26	56/56	8.5/4
26	56/56	8.5/4